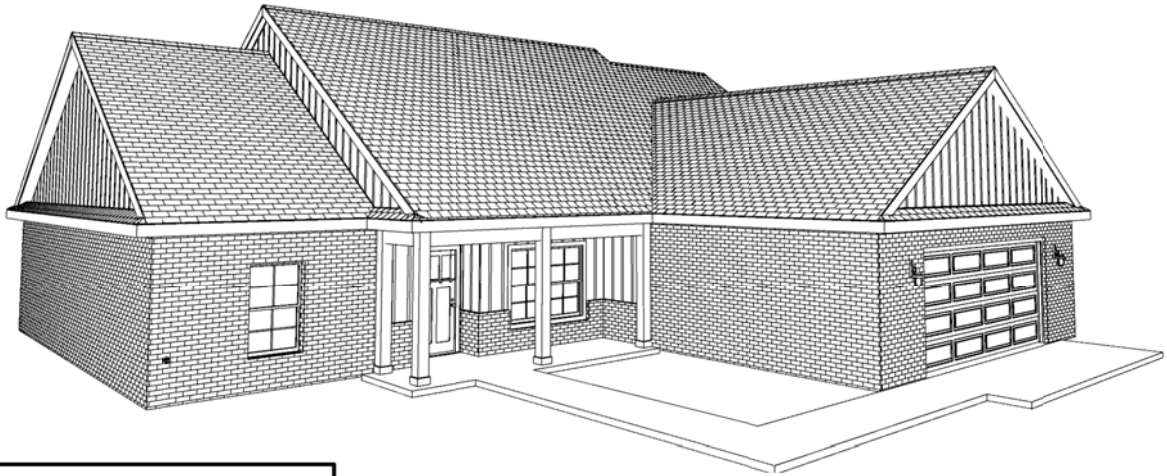


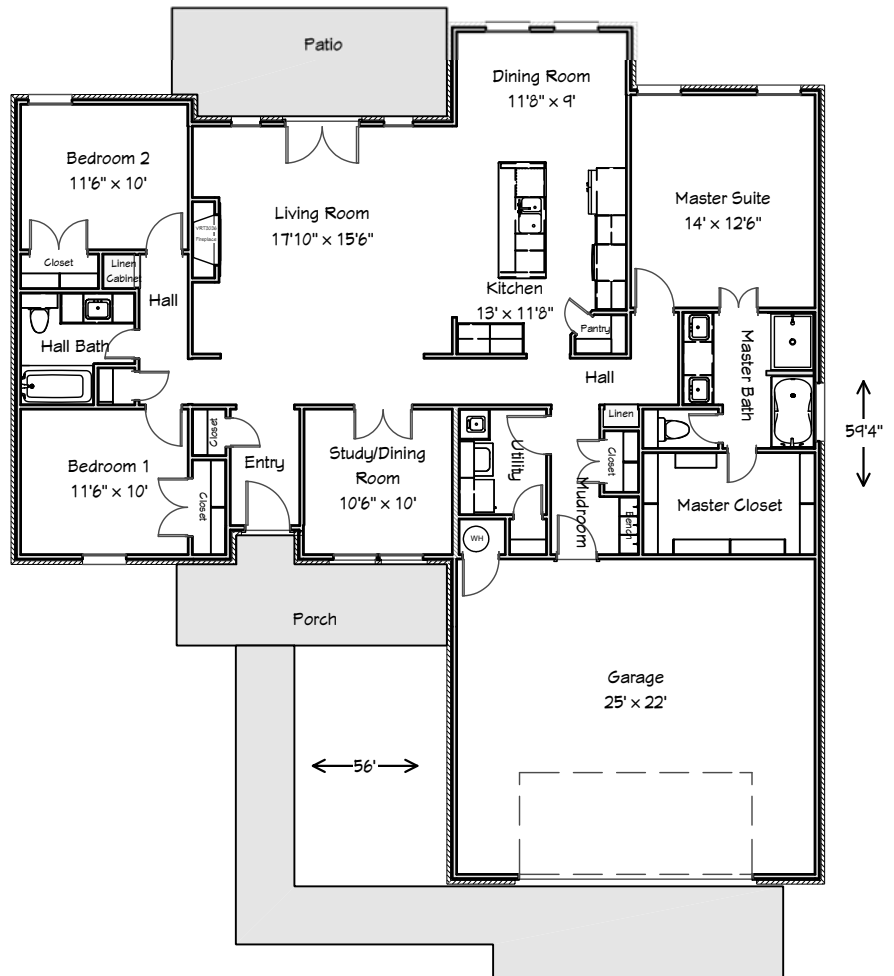
Sovereign Homes™

The Wedgewood



172 Meadowview Lane
Pecan Meadows
Durant
\$216,000
 Available:
September, 2018

- Open, spacious floor plan
- Large Lot - .68 Acres
- 3 bedrooms
- Study/Dining Room
- 1,841 sq.ft.
- Oversized 2-car Garage
- 2 Baths
- Large, walk-in Master Closet
- Vent-free, high efficiency fireplace
- "Post-Tensioned" Slab
- Silo School District
- **10 year Structural Warranty!!!**



Sovereign Homes™
 For Information Contact:
Mark Kennedy
 (580)564-7259

www.sovereignhomesokc.com

Actual dimensions, details and amenities may vary from this rendition. Any measurements are approximate and for general, not technical purposes. While every effort is made to relay accurate information dimensions may vary. Prices, delivery dates and amenities are subject to change without notice. Sovereign Homes is an Equal Housing Opportunity builder.

Copyright, All Rights Reserved, Sovereign Homes™, 2017