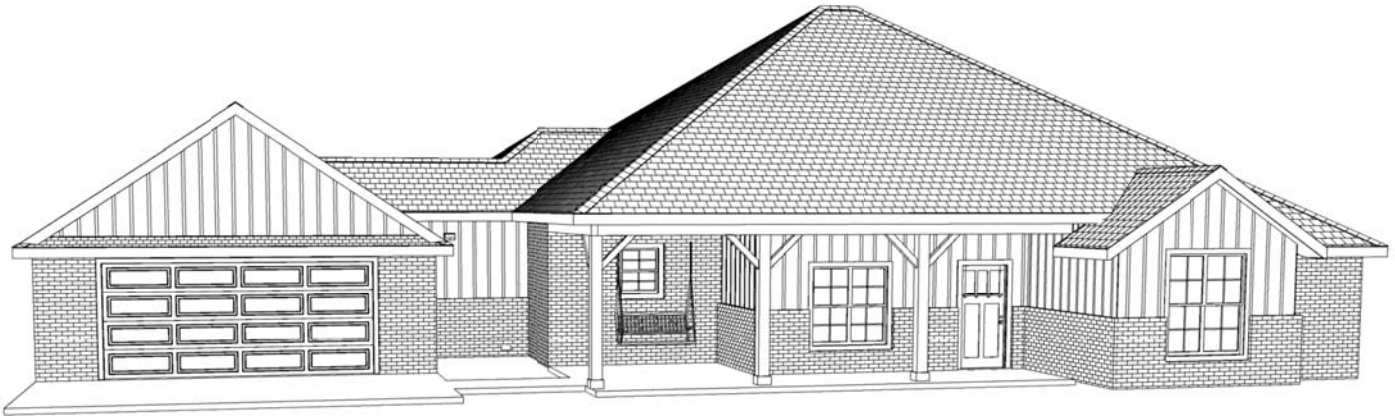


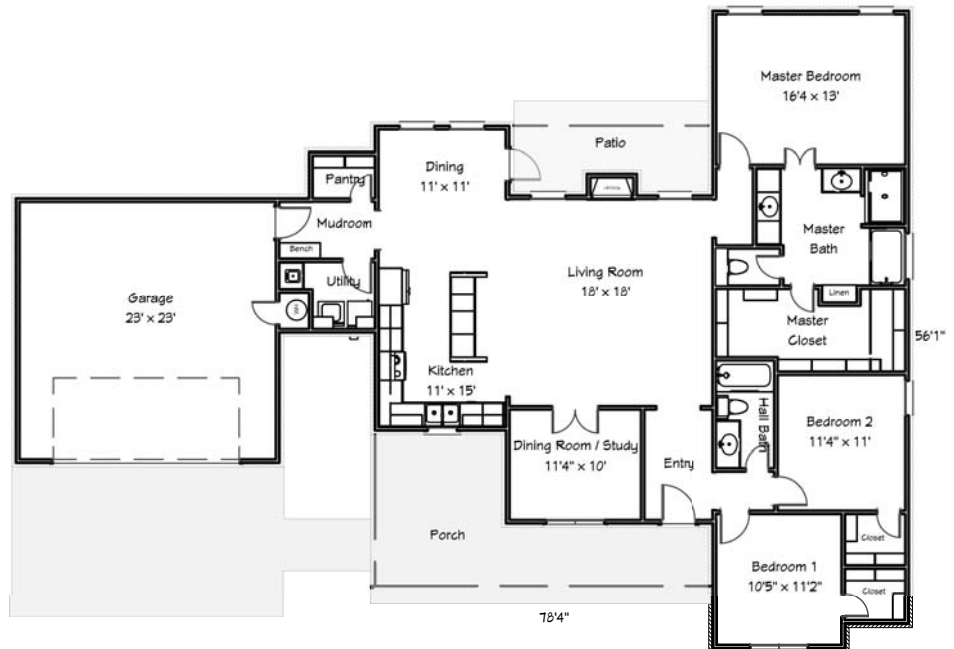
# Sovereign Homes™

## The Marlow



**149 Meadowview Lane**  
**Pecan Meadows**  
**Durant**  
**\$232,500**  
*Available:*  
*Immediately*

- Open, spacious floor plan
- Large Lot - .68 Acres
- 3 bedrooms
- Dining Room/Study
- 1,933 sq.ft.
- Oversized 2-car Garage
- 2 Baths
- Large, walk-in Master Closet
- Vent-free, high efficiency fireplace
- "Post-Tensioned" Slab
- Silo School District
- **10 year Structural Warranty!!!**



**Large Corner Lot!**

**Sovereign Homes**  
**For Information Contact:**  
**Mark Kennedy**  
**(580) 564-7259**

[www.sovereignhomesokc.com](http://www.sovereignhomesokc.com)

Actual dimensions, details and amenities may vary from this rendition. Any measurements are approximate and for general, not technical purposes. While every effort is made to relay accurate information dimensions may vary. Prices, delivery dates and amenities are subject to change without notice. Sovereign Homes is an Equal Housing Opportunity builder.

Copyright, All Rights Reserved, Sovereign Homes™, 2017